

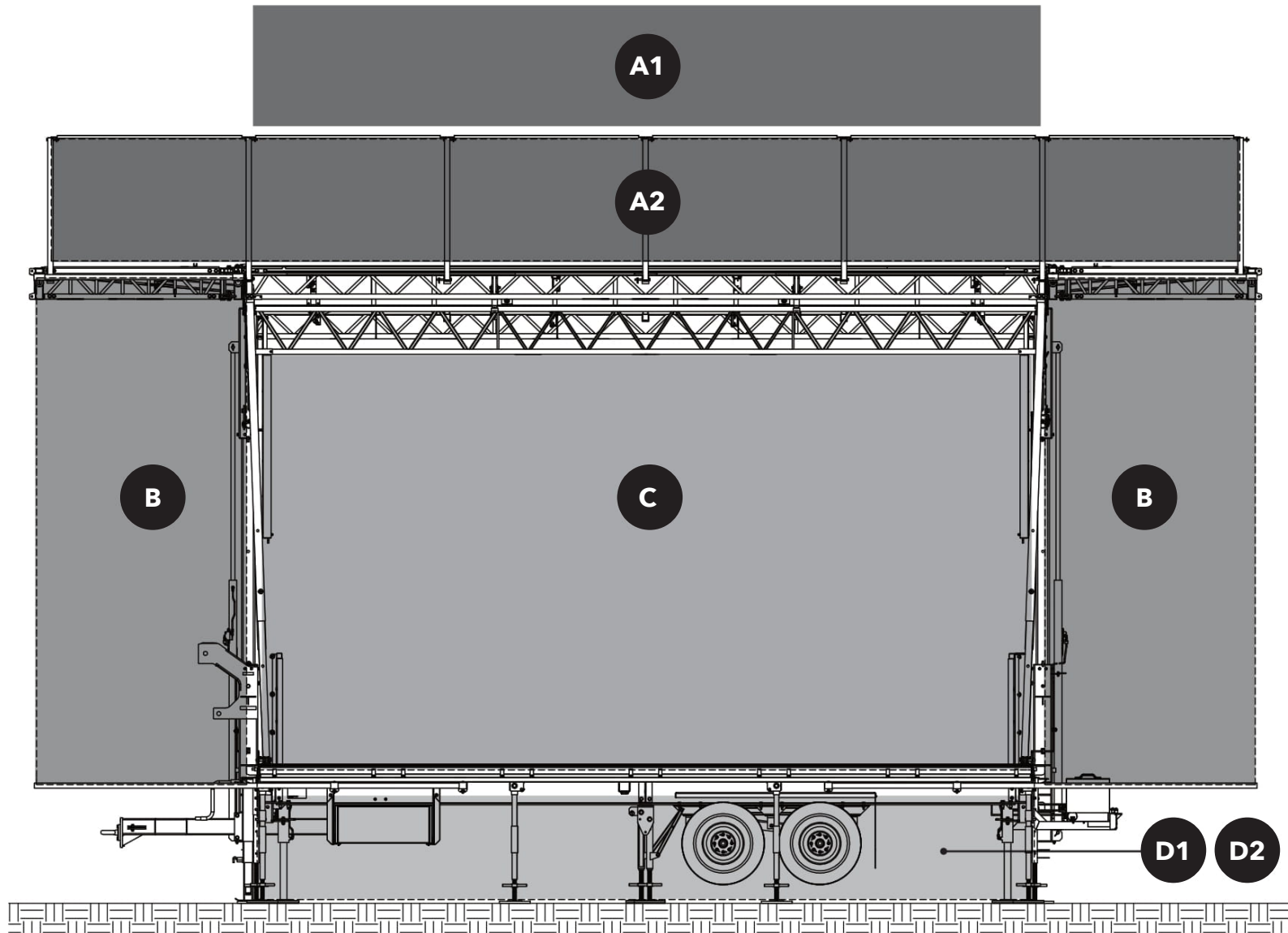


RTHAV

SL 100 BANNERS & TRAILER DESIGN BOOK

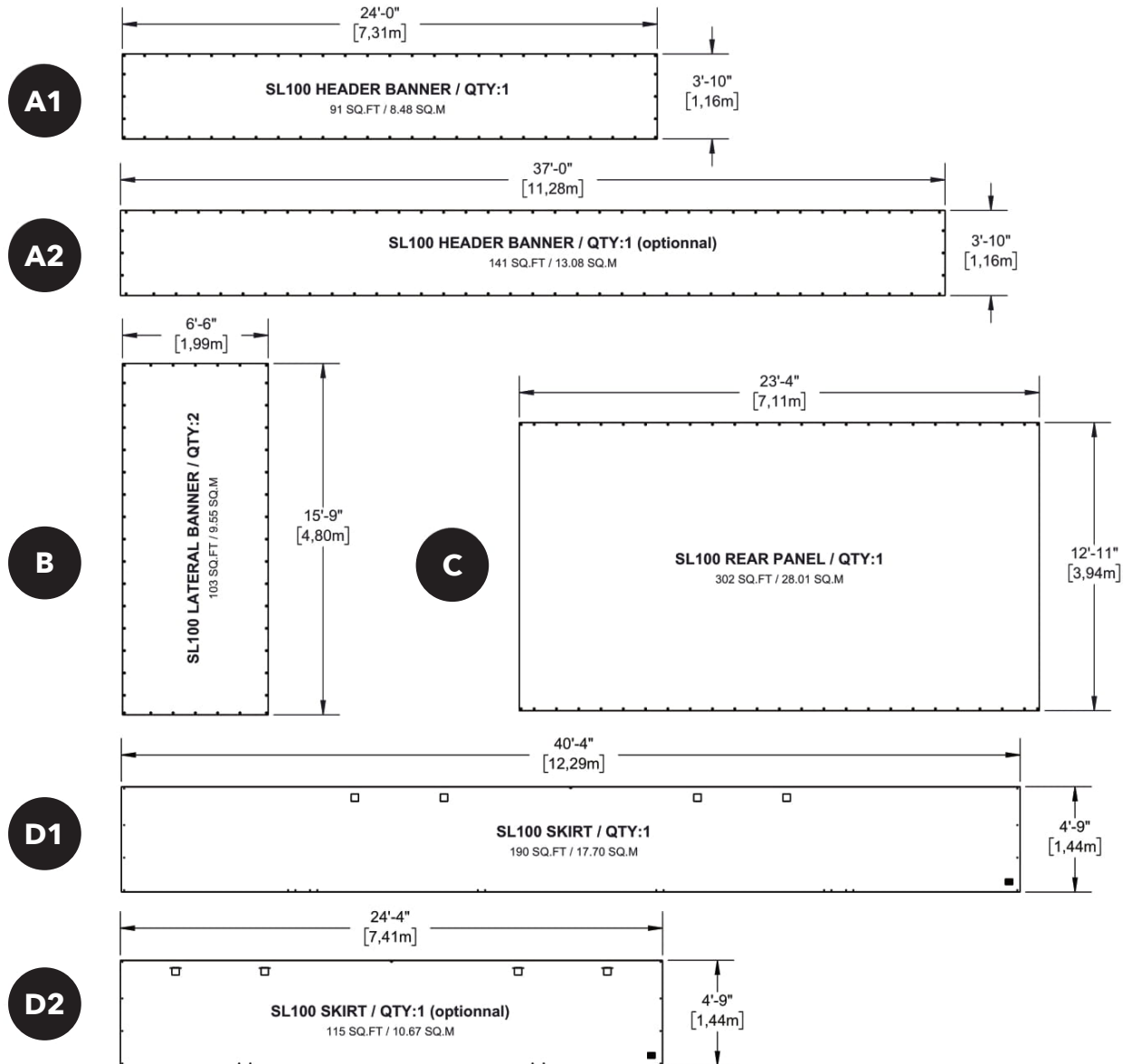
2022



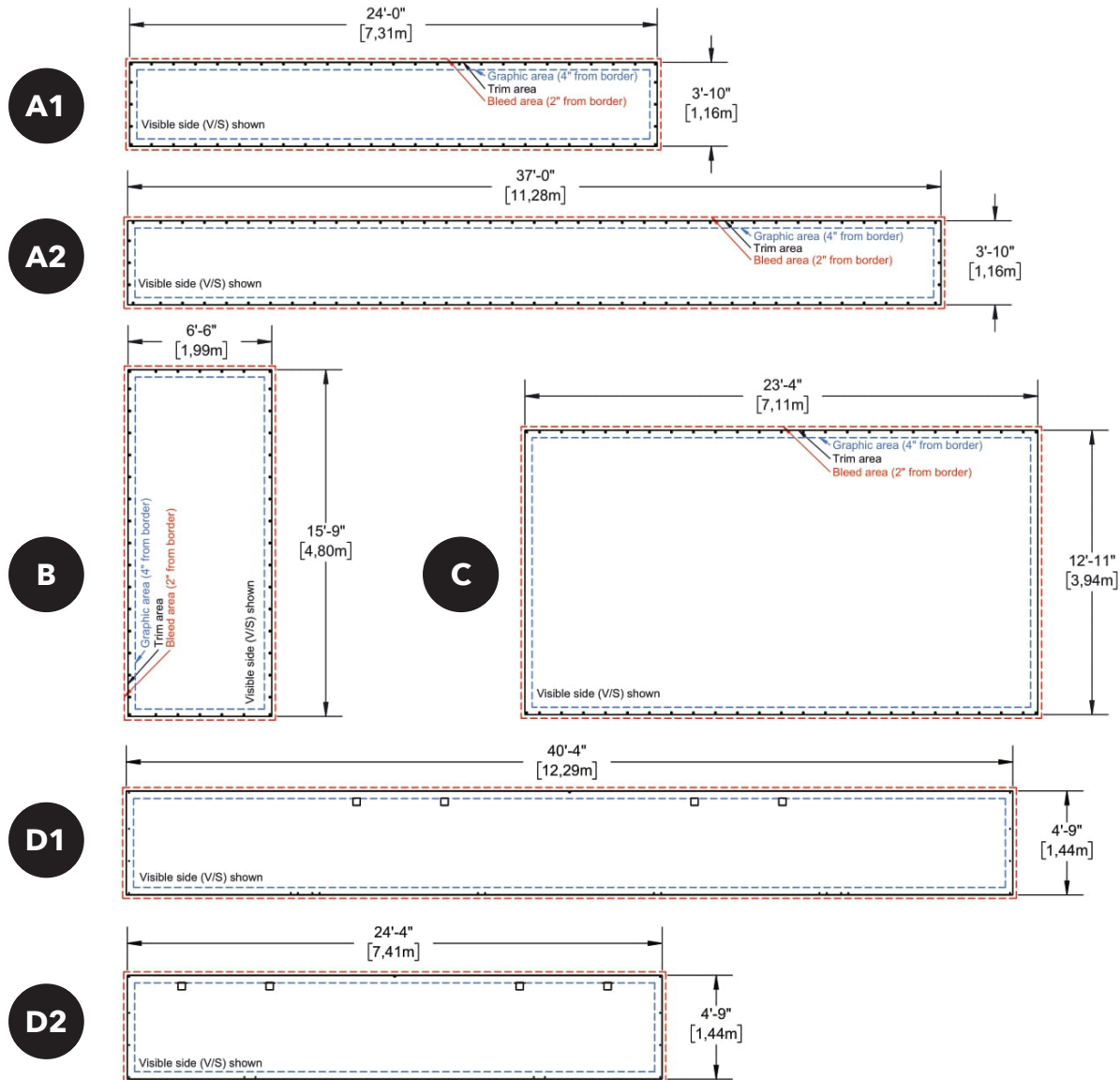


NOTES:

- Install either A1 or A2 when using this stage. Install either D1 or D2 when using this stage.



* Applicable only for units #946 and up.



* Applicable only for units #946 and up.

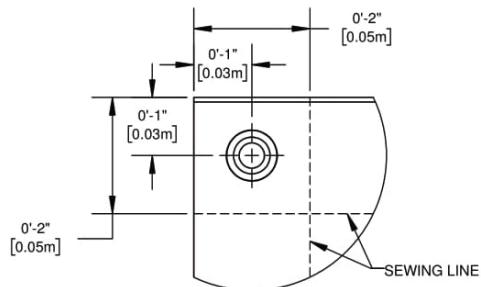


REQUIREMENTS:

- PVC webbing must be all in one piece. Otherwise, reinforce so that no strain is applied to the banner.
- Areas where welds begin and end must be reinforced with additional stitching.
- Include 12" x 12" trimmings of the same material to allow for possible minor repairs.
- Supply one [1] tarpaulin bag for transportation purposes and identify its content.

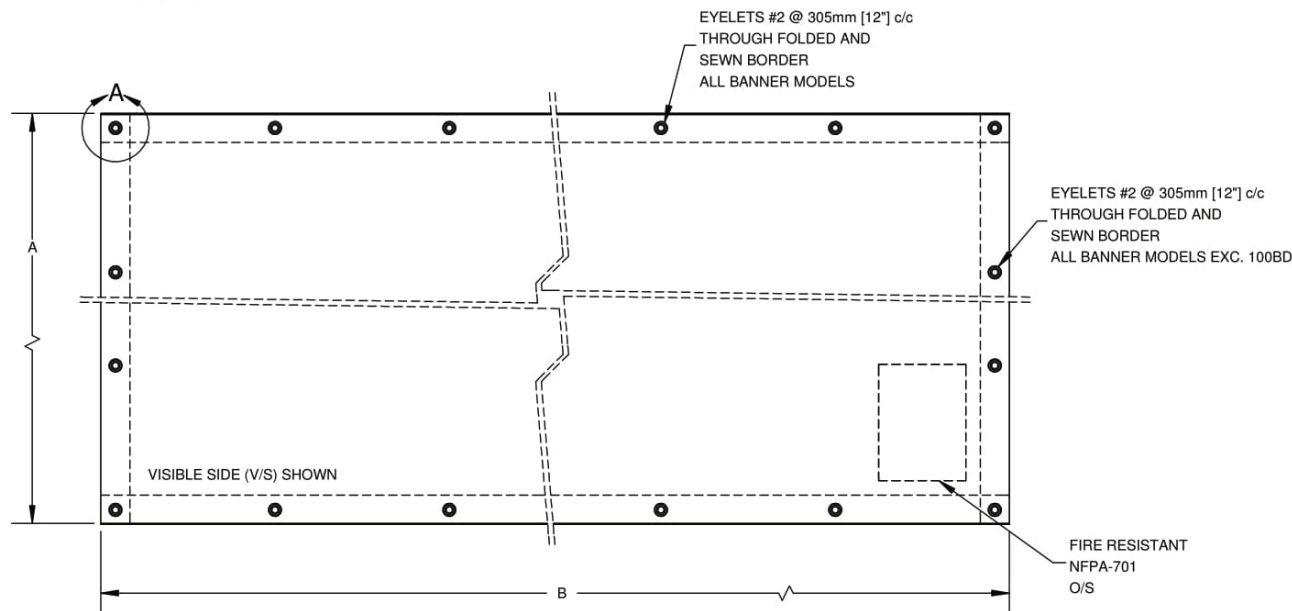
NOTES:

- "V/S" indicates the outside (visible side).
- "O/S" indicates the inside (opposite side).
- Notes on the drawing take precedence on those above.



DETAIL A
SCALE 1 : 3

| | A | B |
|-------|---------|--------|
| 100H1 | 3'-10" | 24'-0" |
| 100H2 | 3'-10" | 37'-0" |
| 100S | 15'-9" | 6'-6" |
| 100BD | 12'-11" | 23'-4" |



MATERIAL CHOICES: (must be NFPA 701 & CAN/ULC-S109 compliant):
70% Open Scrim/18oz Grey Vinyl/Backlight Satin White Weave/Poly Flex White Knit

* Applicable only for units #946 and up.

D1

REQUIREMENTS:

- PVC webbing must be all in one piece. Otherwise, reinforce so that no strain is applied to the banner.
- Areas where welds begin and end must be reinforced with additional stitching.
- All welds and stitches must be continuous and uniform.
- Color match all threads with the vinyl.
- All components must be the same color as the vinyl. If this cannot be done, please contact the purchase agent.
- Include 12" x 12" trimmings of the same material to allow for possible minor repairs.
- Supply one [1] tarpaulin bag for transportation purposes and identify its content.

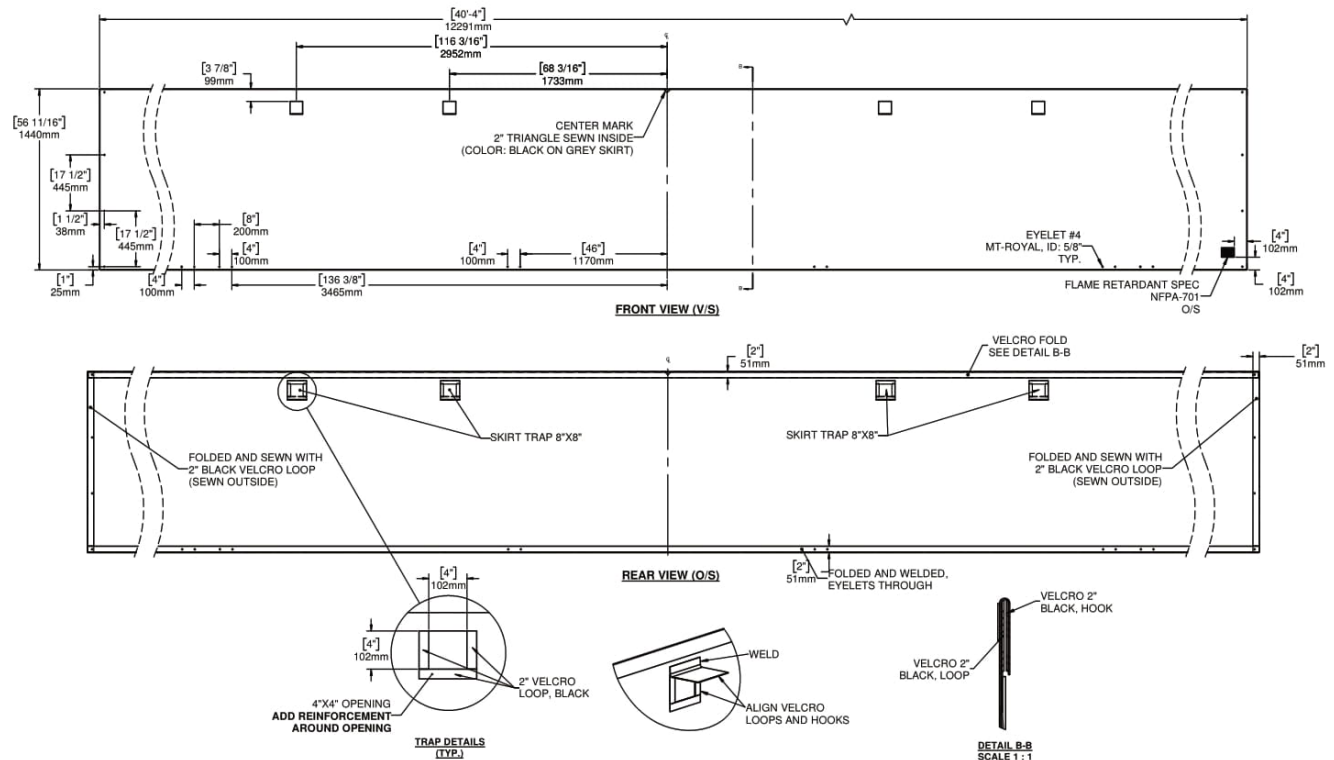
NOTES:

- "V/S" indicates the outside (visible side).
- "O/S" indicates the inside (opposite side).
- Notes on the drawing take precedence on those above.

MATERIAL CHOICES: (must be NFPA 701 & CAN/ULC-S109 compliant):

18oz Grey Vinyl

* Applicable only for units #946 and up.



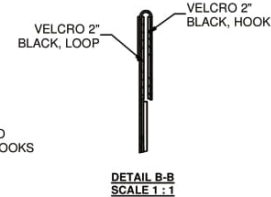
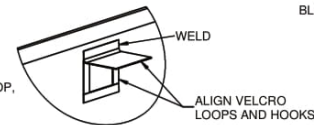
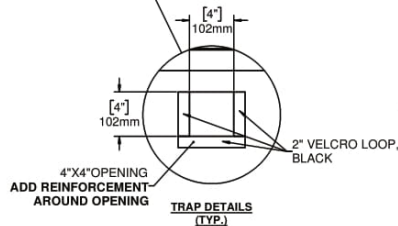
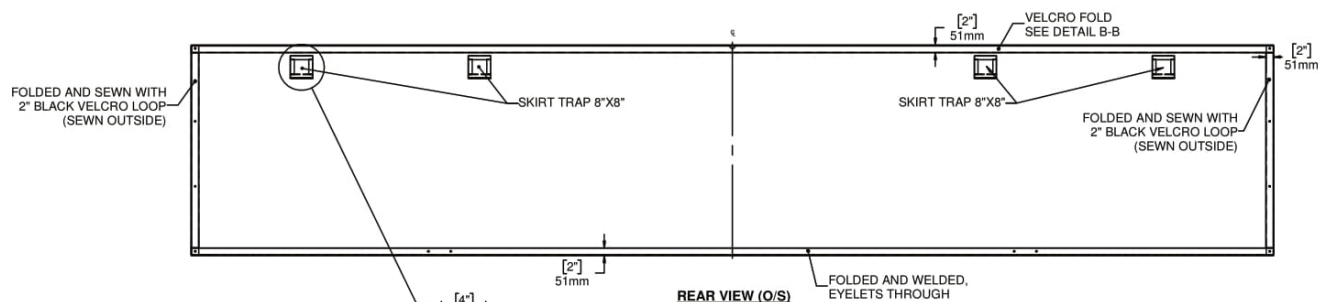
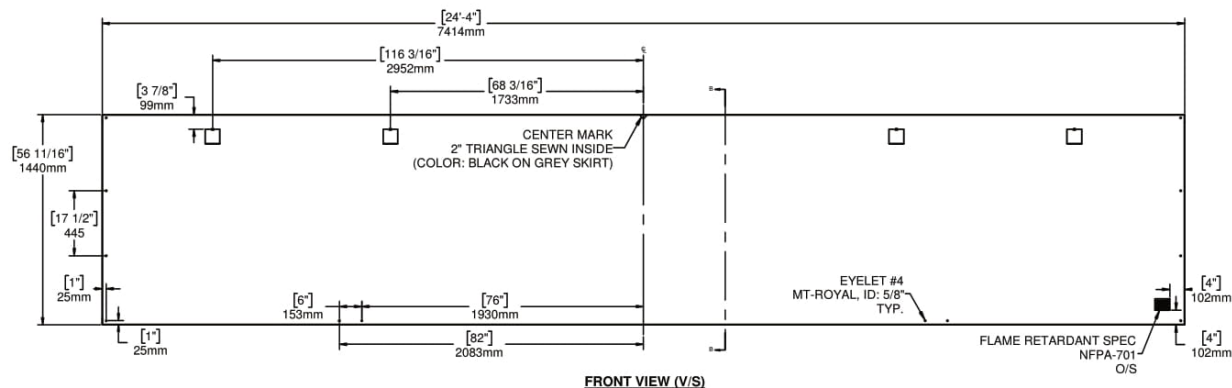
D2

REQUIREMENTS:

- PVC webbing must be all in one piece. Otherwise, reinforce so that no strain is applied to the banner.
- Areas where welds begin and end must be reinforced with additional stitching.
- All welds and stitches must be continuous and uniform.
- Color match all threads with the vinyl.
- All components must be the same color as the vinyl. If this cannot be done, please contact the purchase agent.
- Include 12" x 12" trimmings of the same material to allow for possible minor repairs.
- Supply one [1] tarpaulin bag for transportation purposes and identify its content.

NOTES:

- "V/S" indicates the outside (visible side).
- "O/S" indicates the inside (opposite side).
- Notes on the drawing take precedence on those above.



MATERIAL CHOICES: (must be NFPA 701 & CAN/ULC-S109 compliant):

18oz Grey Vinyl

* Applicable only for units #946 and up.